

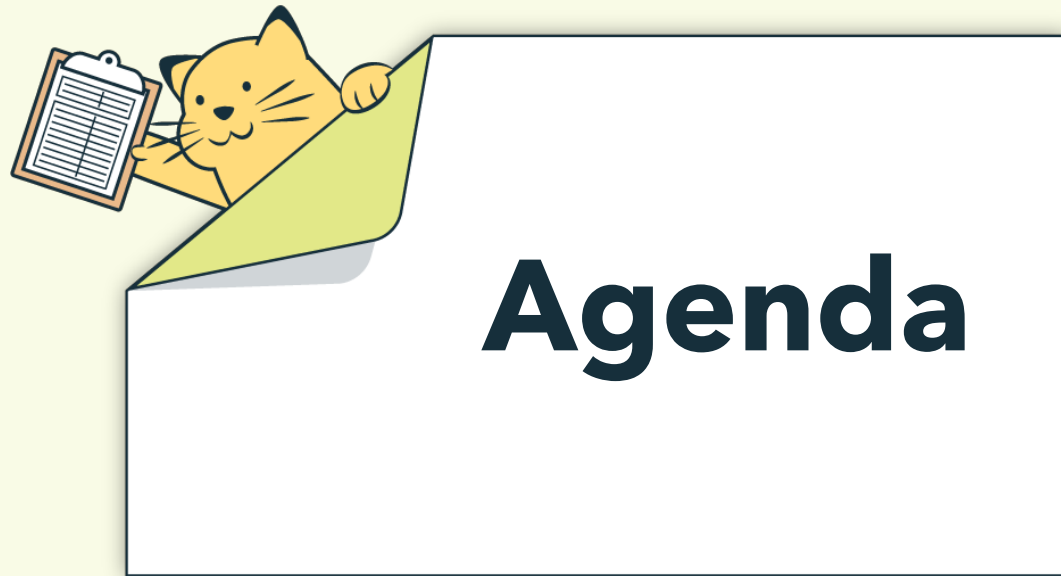
CarbonHub 101



Lalit Agarwal

VP, Energy Management & Sustainability
EnergyCAP





- ✓ Overview of the required objects for bill data
- ✓ Hands on practice creating objects
- ✓ Discussion on how you can create items in bulk
- ✓ Wrap-up: raffle, Q&A, survey

Energy and sustainability ERP // The single source of truth

Get instant access to validated, actionable data you can trust to better manage resource consumption, reduce your carbon footprint, reach net-zero, and drive massive savings.



Financial-grade greenhouse gas accounting

Target and track emissions.

An advanced, holistic view of financial-grade emissions data across your business with automatically applied factors to meet your ESG reporting needs.

Customer Data Type:

GHG activities

Persona:

Sustainability



Portfolio-level energy and sustainability reporting

Manage and see it all.

Get accurate and reliable energy and utility data across your entire portfolio and streamline energy and accounting workflows.

Customer Data Type:

Utilities/Bill/Resources

Persona:

Finance/energy



Real-time energy and sustainability analytics

Dive deep. Respond quickly.

Dive deep into real-time performance of assets, devices, and sensors. Make quick, data-driven decisions for high-performance, net-zero buildings.

Customer Data Type:

Time-Series/Interval Energy

Persona:

Energy/facilities

CAPture Services: Bill CAPture, Bill Processing/Managed Services

A single platform for the entire team

The EnergyCAP ERP brings energy, sustainability, and finance teams together to capture, allocate, analyze, and report the data the way they want it.



Energy managers

Operate from one single source of truth with accurate and reliable data. Create, verify, and visualize the energy program you need now.



Sustainability leaders

Automatically convert your data into greenhouse gas emissions and provide a holistic view of sustainability across your organization.



Finance leaders

Get a tool that supports the unique demands of energy accounting. With EnergyCAP, you get a partner that enhances your already-predictable system.

EnergyCAP CarbonHub



Financial-grade greenhouse gas accounting

Target and track emissions.

An advanced, holistic view of financial-grade emissions data across your business with automatically applied factors to meet your ESG reporting needs.

Customer Data Type:

GHG activities

Persona:

Sustainability



Sustainability leaders

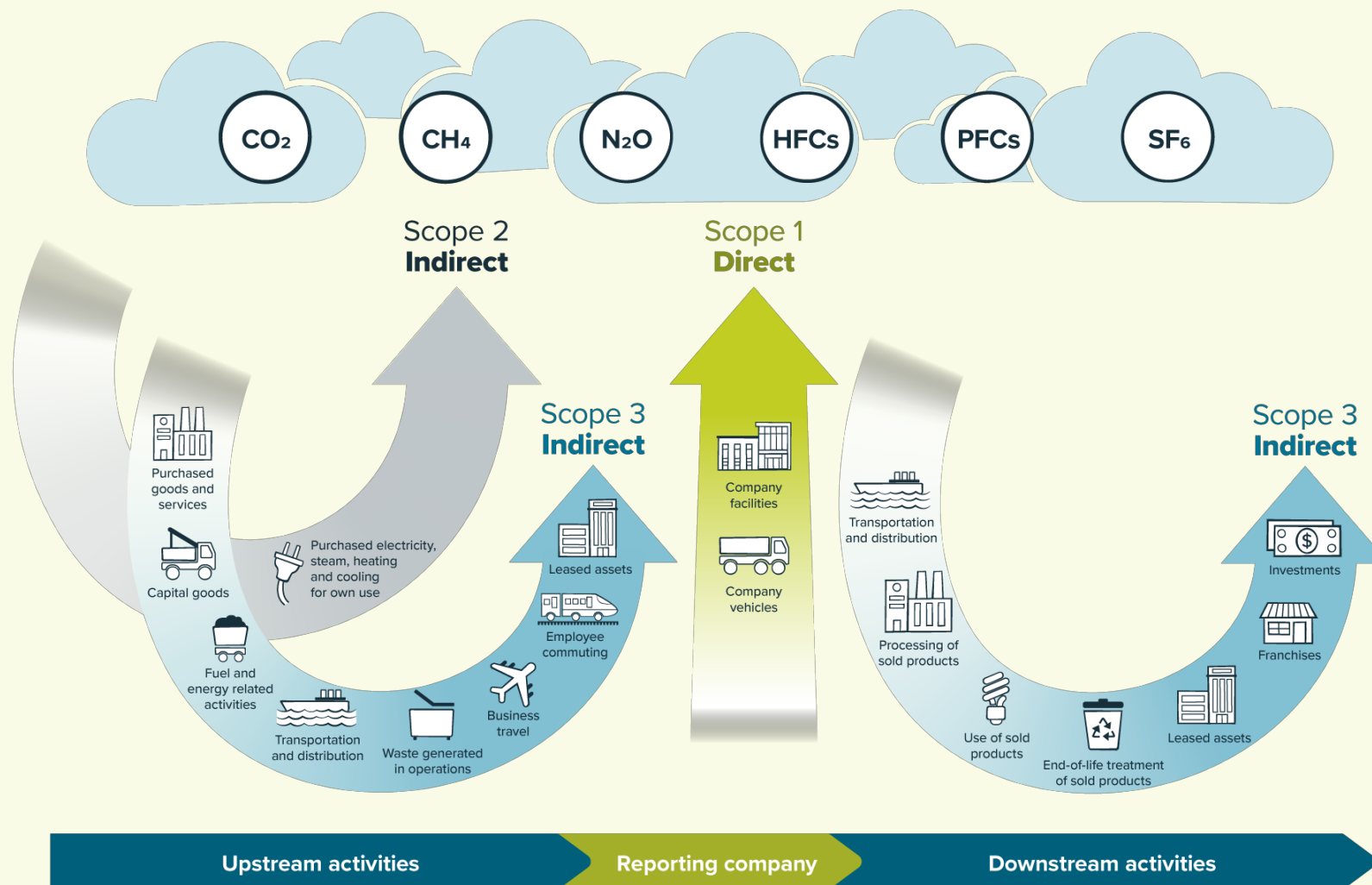
Automatically convert your data into greenhouse gas emissions and provide a holistic view of sustainability across your organization.



CATALYST '24

Basics of Greenhouse Gases (GHG)

Overview of scope categories and GHG emissions



Which scope emissions does this activity represent?

I burn natural gas in the building boiler to make Steam/Hot Water to heat my building.

Scope 1



Which scope emissions does this activity represent?

I purchased 200 laptops for my team last year.

Scope 3

Category 1 (Upstream)



Which scope emissions does this activity represent?

I use UPS/FedEx to deliver our finished product to the customer.

Scope 3

Category 9 (Downstream)



Which scope emissions does this activity represent?

I purchase electricity from my local grid operator.

Scope 2 (Purchased Electricity)



Key drivers for organizations



Stakeholder driven

Students on campus
Citizens of city/county/state



Regulation

Local laws (NYC Local Law 97)
State laws (California law)
Federal laws (SEC rule - adopted and paused)



Investor pressure



Preferential lending terms



CATALYST '24

CarbonHub

Primary Objects



Collections

Organize emissions sources in a hierarchy.



**Emissions
Sources**

Contains emission records.



**Emission
Records**

Stores emissions information and values.



CATALYST '24

Live examples

Questions?



CATALYST '24



Session survey